



*“Promoting Cooperation among European Regions for Capacity Building of Integrated Care Systems based on Innovative Services and Technologies”*

**Reshaping Healthcare: transfer of complexity  
from hospital to home**

***Francisco Lupiáñez-Villanueva***

# Reshaping Healthcare: transfer of complexity from hospital to home

[www.jrc.ec.europa.eu](http://www.jrc.ec.europa.eu)

Francisco Lupiáñez-Villanueva  
@flupianez

<http://www.ictconsequences.net>  
Information Society Unit

*Serving society  
Stimulating innovation  
Supporting legislation*

Disclaimer: "The views expressed in this presentation are purely those of the authors and may not in any circumstances be regarded as stating an official position of the European Commission"

# **Reshaping Healthcare: transfer of complexity from hospital to home**

**and**

**Society**

**Health in all policies**

# Reinforcing data gathering through active collaboration with Healthcare Actors

- To develop ICT for Health indicators with the maximum level of granularity
- Modeling different information sources and different levels of analysis (micro, meso and macro)

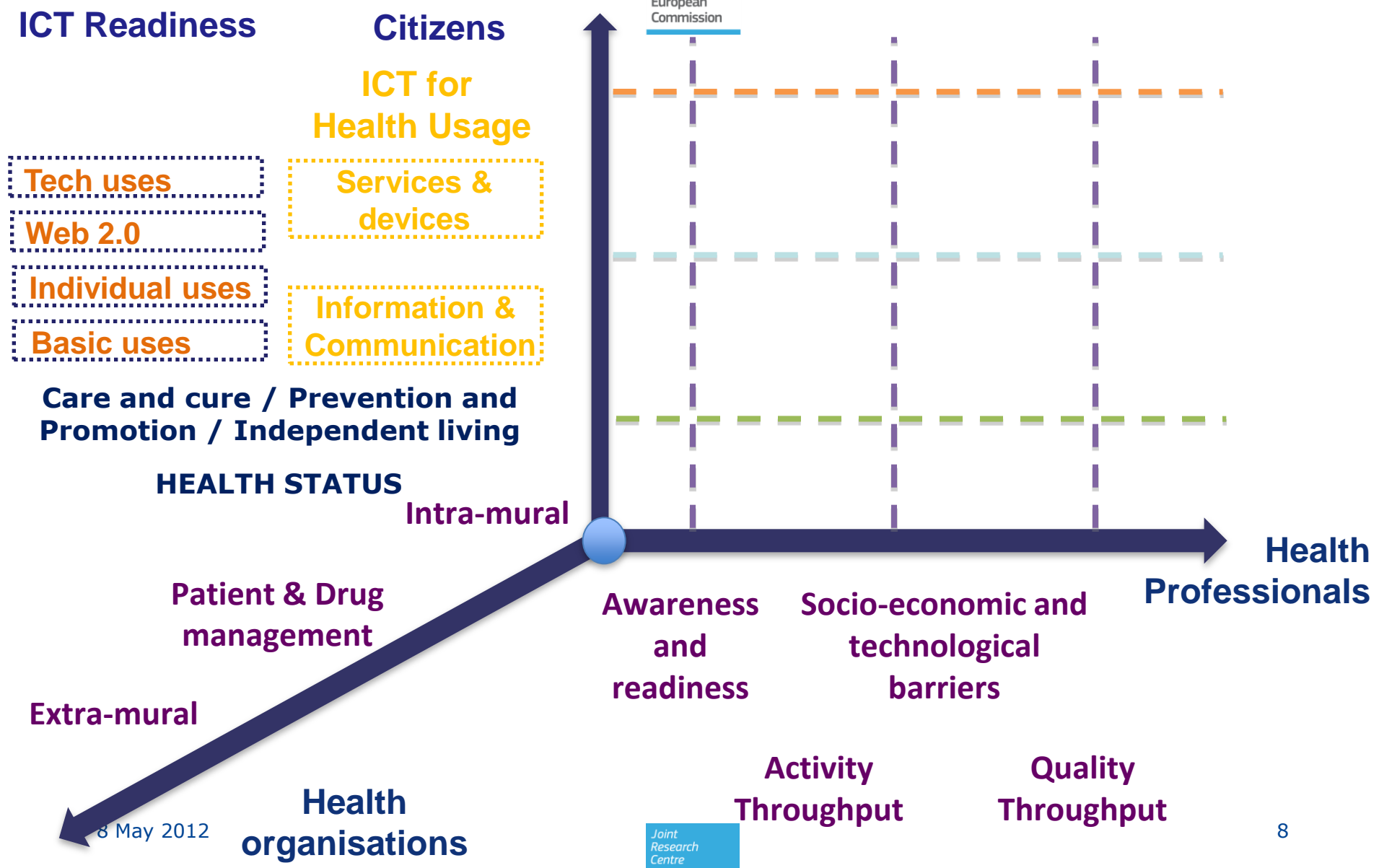
## Analysing the demand side

- Internet users (14 EU countries – 14.000 respondents)
- Health professionals (nurses and doctors) aprox. 3000 professionals
- Primary care (inputs, outputs, outcomes, health status, prevalence, ICT uses)
- Hospitals eHealth deployment
- <sup>8 May 2012</sup> Health status of the population

# Triangulation



European Commission





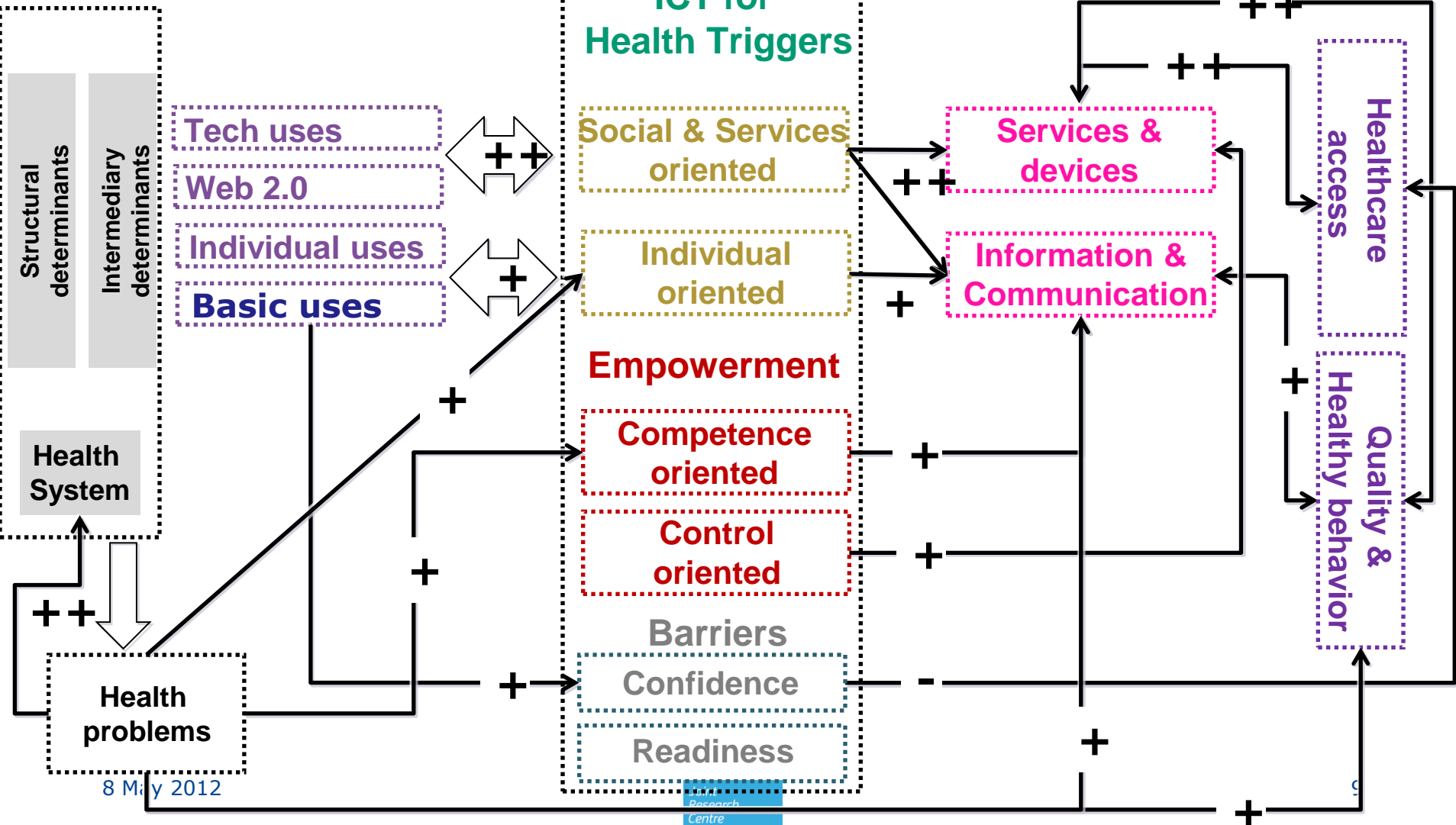
European Commission

### ICT Readiness

### MOTIVATION

### ICT for Health Usage

### ICT for Health Impact



# Challenges: better data → better models → policies?

- **Which data from what sources?**
  - Regional - National
  - IT systems information availability
- **What should be modeled first?**
  - Health status
  - Care and cure / Prevention and Promotion / Independent living
  - Adoption of health professionals and citizens
  - Diffusion of innovation within the organizations...
- **Methods**
  - Micro-level estimation parameters linked to country-level framework
  - Dynamic modeling considering general or partial

# Evidence based policy

*Transparent and robust policy-making tools*

*Monitoring (results - targets)*

*Learning (inputs – process)*

*Impact assessment – health indicators*





# **Reshaping Healthcare: transfer of complexity from hospital to home and Society**

## **Health in all policies**

**Francisco Lupiáñez-Villanueva  
@flupianez**

**<http://www.ictconsequences.net>**

Information Society Unit

European Commission's Joint Research Centre (JRC)  
Institute for Prospective Technological Studies (IPTS)