



*“Promoting Cooperation among European Regions for Capacity Building of Integrated Care Systems based on Innovative Services and Technologies”*

**INTEGRAL HEALTHCARE AREA OF  
BARCELONA ESQUERRA:  
An example of an Integrated Care System**

*David Font*

# **INTEGRAL HEALTHCARE AREA OF BARCELONA ESQUERRA:**

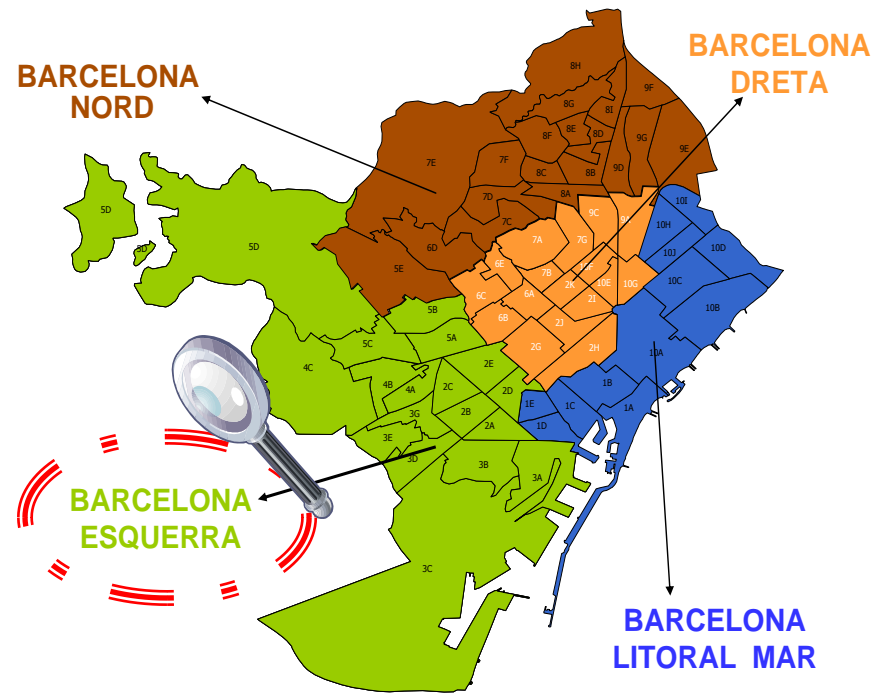
## **An example of an Integrated Care System**

**Barcelona, Abril 25 th 2012**

# BARCELONA ESQUERRA INTEGRAL HEALTHCARE AREA

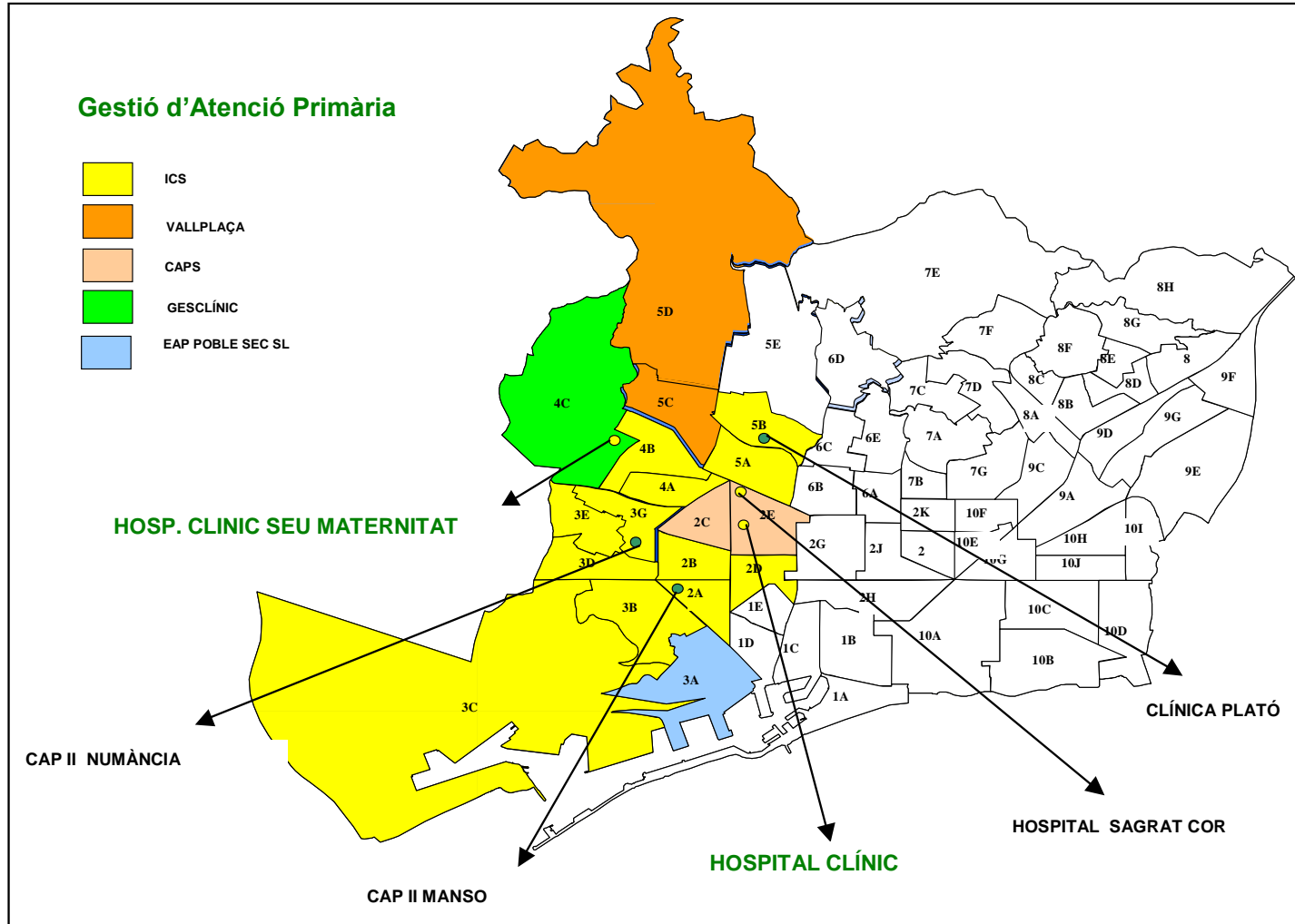
## MISSION

*Offering an integral health care to the population in a territorial framework by effective coordination between institutions and health care professionals*



# BARCELONA ESQUERRA

540.000 Inhabitants. 4 Hospitals, 21 Primary Care Centres.  
Hospital Clínic as principal care provider.

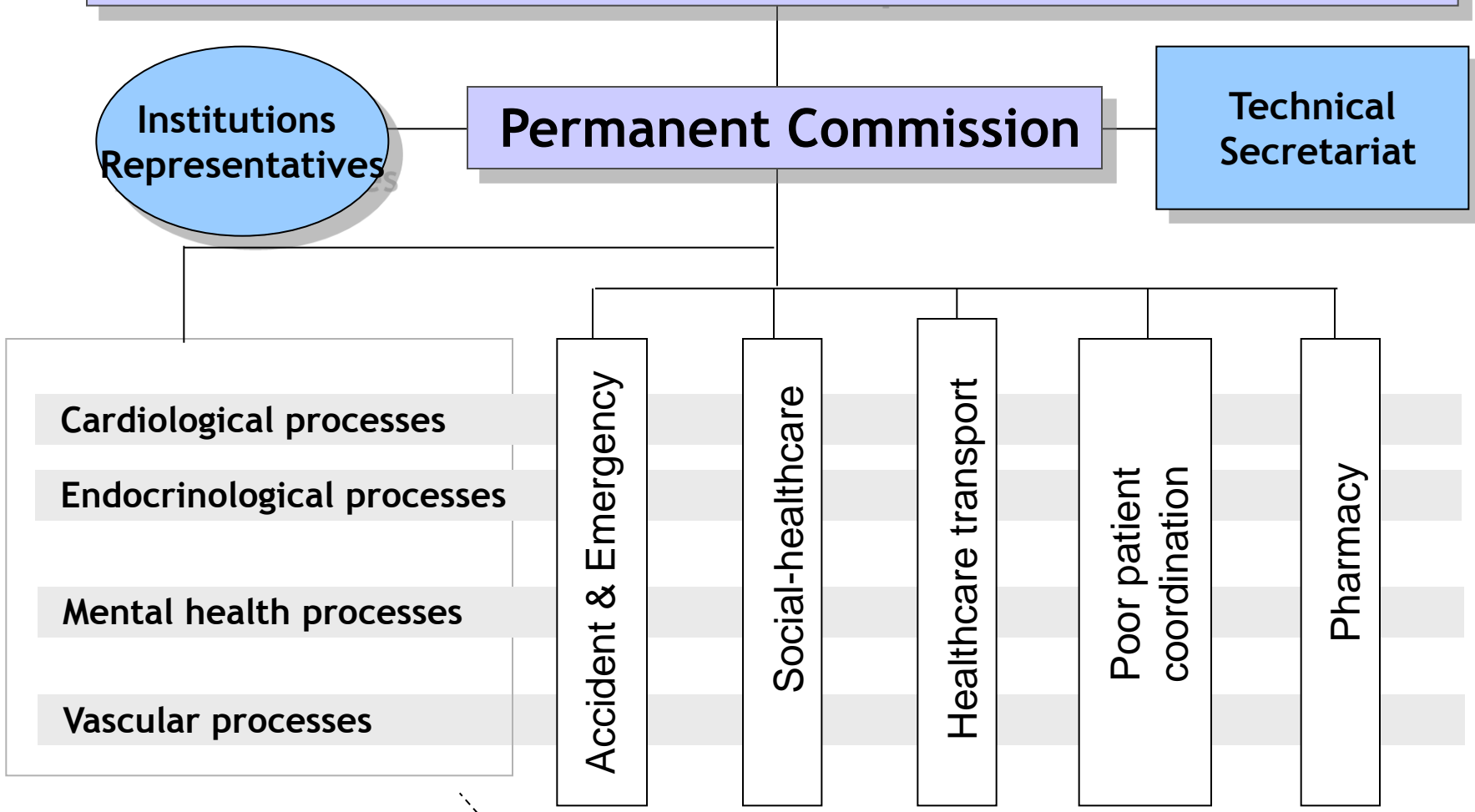


# BARCELONA ESQUERRA

- **Providers Heterogeneity** (Culture, Strategy, Information Systems) at the baseline situation.
- **From a project (2005-07) to a consolidate structure (2008)**, with an organizational model extended to the 4 Areas of Barcelona.
- **Implementing Clinical Management** and improving Patient Orientation **with an overall analysis** that contemplates Strategy, Organizational Model, Processes and Information Systems.

# ORGANIZATIONAL MODEL

## Territorial Health Care Commission Barcelona Esquerra



# CLINICAL PROCESSES

- **Agreements specialty by specialty based on clinical groups:**
  - **Organization of tertiary care and basic pathology**
  - **Protocols and single clinical procedures, with initial agreements for management of key tests and pharmaceutical prescription**
  - **Devices at the service of the territory**
  - **Joint training activities**
  - **First shared research initiatives**

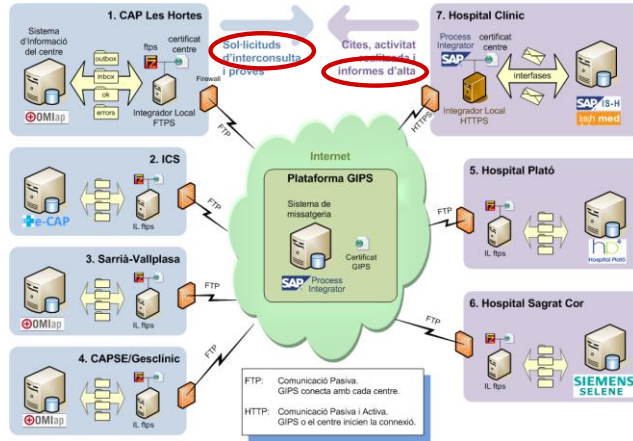
# CLINICAL PROCESSES

- **Redesign of chronic pathology as a priority in the 2011-13 Plan:**
  - **COPD, Cardiac Insufficiency and Diabetes, contemplating co-morbidity**
  - **Focused on the patient**
  - **Based on consolidated clinical groups**
  - **Where nursing plays a key role**
  - **With all the technological support available and with Information Systems developed.**



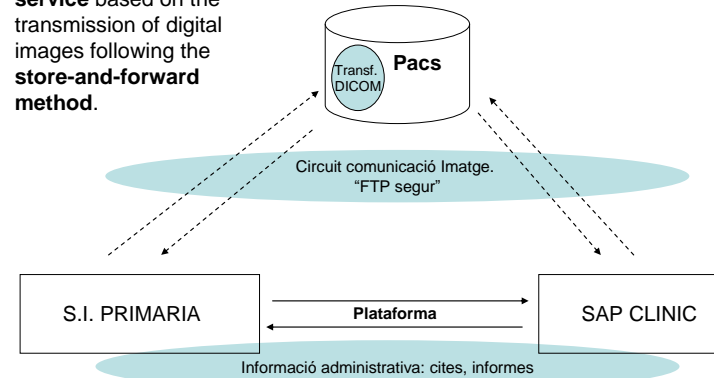
# TERRITORIAL INFORMATION SYSTEMS

## Interoperability using a Corporate Platform

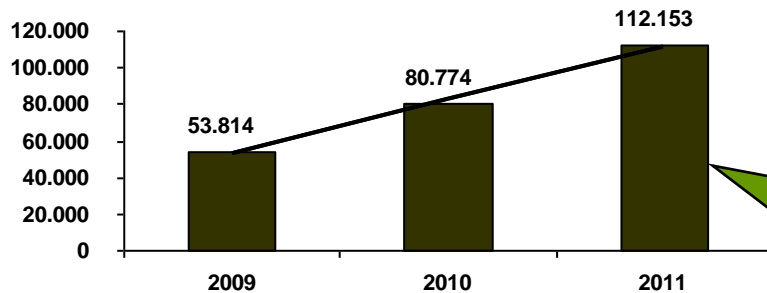


## Teledermatology

Teleconsultation service based on the transmission of digital images following the store-and-forward method.



## Global statistics GIPs. Transactions



- Integration: Clinical Documents, Visit Requests and Citations.
- Upcoming functionality: Image, Balanced Scorecard.